



# STATION ARTS CENTRE

---

## CAFE LEASE INFORMATION PACKAGE

The Station Arts Centre is a cultural hub located in a historic train station in Rosthern, SK. It's a welcoming place for people to gather for excellent art experiences as well as delicious food and drink. The Station is looking to lease the kitchen and gallery / dining space to a local entrepreneur. Our goal is to find a suitable partner with the hopes of establishing a long-term relationship in our shared space. A good working relationship is our top priority.

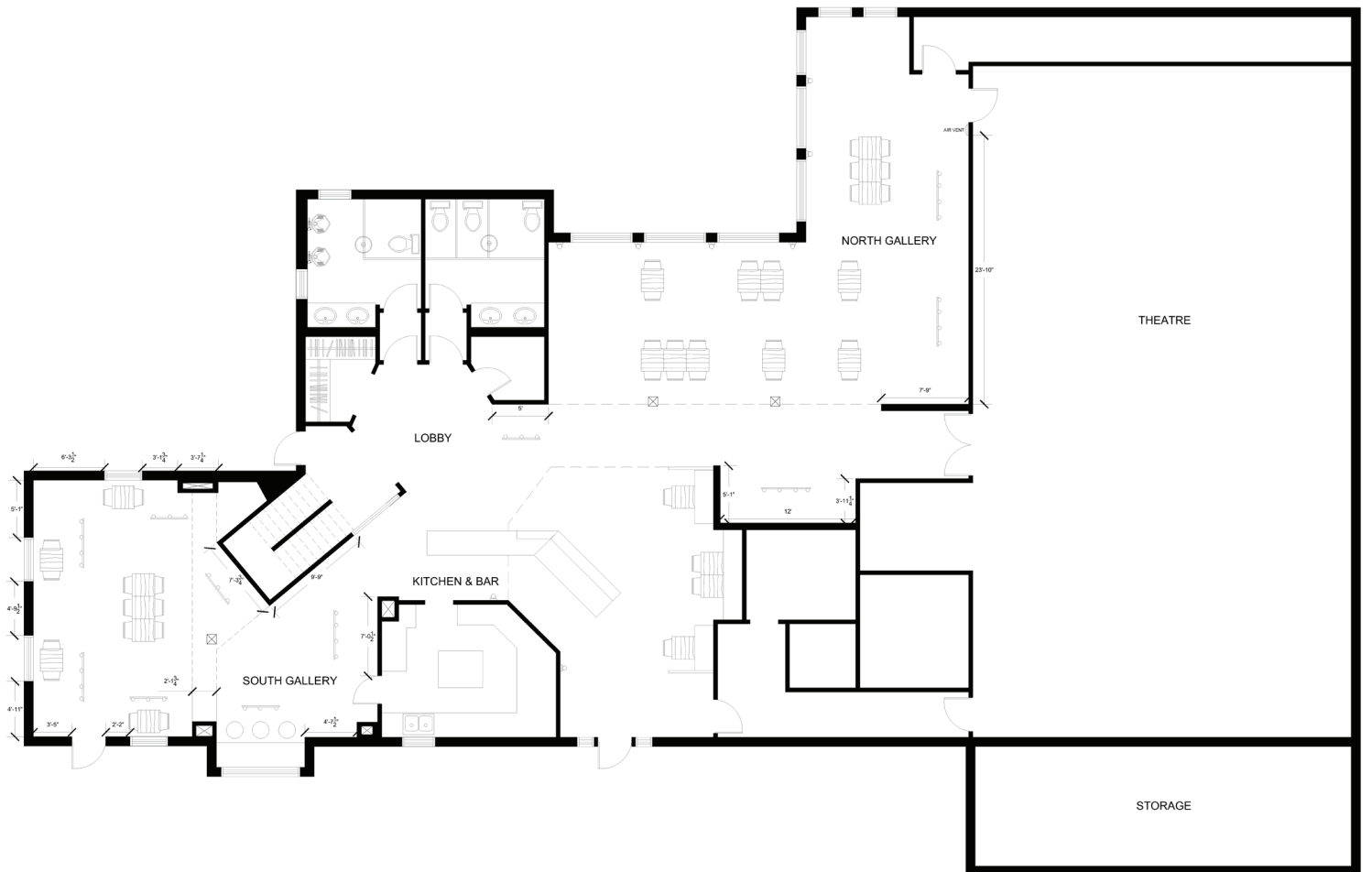
We are seeking a business that is willing to support local makers while complementing our role as a community arts centre. Creativity, consistency and collaboration are three key qualities we are looking for. We welcome the opportunity to enrich our events with quality food & drink and friendly service.

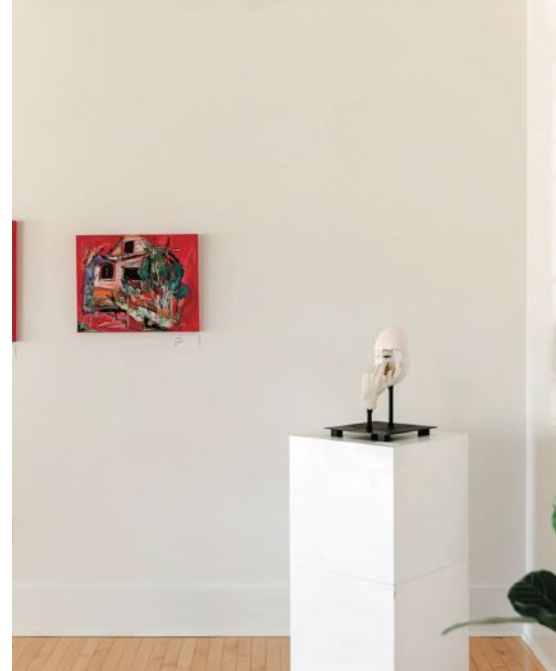
Here's a look at our fabulous space!





# Floor Plan Layout







Our patio offers additional dining space in the summer months.

With views of the adjoining gardens, it's the perfect spot to enjoy the sunshine with a cool drink in hand.



## About Rosthern

The Station Arts Centre is located in the thriving town of Rosthern which is conveniently located halfway between Saskatoon and Prince Albert. Rosthern is a scenic 30 minute drive from Saskatoon on divided Highway 11. The town's population is 1,800 with a varied demographic. The town has numerous services - schools (elementary and high school), RCMP, hospital, dental clinic, grocery store, library, pharmacy, hardware store, outdoor pool, thrift store, churches, etc. The regional park and golf course also draws visitors. Rosthern is an attractive place to live and appeals to young families as well as those newly retired. Residents appreciate the many services offered within the town while enjoying the charm of small town living.

# Overview

Fully Equipped, 12 x 15 Kitchen (180 Sq. Ft.)

Dining Room Seats 40 People Comfortably

Accommodates 160 People for Receptions

Close to 5,000 Visitors Annually

Theatre Seats 160 People

Dozens of Events Each Year

Serves Rosthern & Surrounding Area

## Cafe Equipment

Gas Range/Oven and basic hood - Garland

Commercial Dishwasher - Hobart

Commercial Cooler - Turbo Air

Commercial Coffee Maker - Bunn

Commercial Coffee Mill - Bunn

Commercial Espresso Machine - Rancilio

Commercial Espresso Grinder - Rancilio

Commercial In-counter Display Cooler - Atosa

2 Kegerators & Taps (hold 3 kegs each) - Kegland

Reverse Osmosis Water System for bar

Square POS system



NOTE: These are the main cafe items with the addition of several smaller appliances.

Equipment use is negotiable. Lessee may prefer to rent their own equipment.

We are not vented for a fryer and are not permitted to use one, but are permitted a self-venting fryer (\$5K - 7K).

Extra storage for glassware, extra fridge and freezer in basement and storage room.

# Statistics

44 events with 2,859 patrons (not including summer theatre) in 2024.

4,800 gallery/cafe patrons visited the Station in 2024 while open 4 days/week.

SAC has 3 - 4 events/month ranging from musical performances to popular Art Activity nights. Events often fall on Thursday nights but can include Fridays and Saturdays as well. These events attract ages 35-65 who prefer less expensive tickets.

We offer 6 concerts/season as part of the SAC Concert Series. These are typically sold out shows to audiences ages 45 - 85 who pay more for tickets and enjoy booking pre-show meals when available. The shows attract a loyal, dedicated audience within a 75 km radius of Rosthern.

Summer Theatre Rentals in 2024 attracted 1,400 patrons.

Rentals/Catering had 50 events with full-catered meals, bar service or both in 2024. Since January 2025, SAC has had 12 rental events so far with 950 people. We are currently booked up until July.

---

We would love to have a delicious & attractive food service at  
The Station Arts Centre.

And our patrons would love it too!



The Station Arts Centre has been in operation for 35 years, and we value the relationship we have with our community and surrounding area. Patrons view our organization and the cafe within it as one entity due to our shared space; this is why we are so invested in finding the right person or business.

## Ideal Candidates:

- ➔ Would offer fresh & unique food.
- ➔ Provide food and drink to complement our programming and evening events.
- ➔ Be friendly, respectful, and professional.
- ➔ Work hand-in-hand with the Station Arts Centre.
- ➔ Be open several days each week with consistent hours.
- ➔ Be comfortable being the "front line" for patron experiences.
- ➔ Communicate clearly & effectively with Station board & directors.
- ➔ Use local ingredients and makers as much as possible.

If you're interested in learning more about this exciting opportunity, please consider submitting a proposal.\* The following page outlines some details on what to include in your proposal. Proposal deadline is May 1, 2025.

Please email [stationcafe@gmail.com](mailto:stationcafe@gmail.com) for more information or to book an on-site visit and tour of our facility.

\*The Station Arts Centre, at its sole discretion, reserves the right to approve, to accept or reject any proposal, and to cancel or terminate this initiative without obligation or notice.

# What to Include in Your Proposal:

Thank you for your interest in submitting a proposal to the Station Arts Centre. Please answer the following questions in your proposal and show us how you would be our *ideal candidate*.

1. What type of food service are you interested in offering?
2. What is your business model or idea?
3. Are you willing to provide food/drink to complement our programming and evening events?
4. Do you have past experience in the industry? If so, please tell us about it.
5. Are you able to provide industry related references? If so, please list them.
6. What are your credentials or qualifications? Please tell us a bit about yourself.
7. Do you currently have a commercial kitchen?
8. When would you be interested in starting / opening at the Station Arts Cafe?
9. What would your ideal weekly schedule look like? Please give us a sense for how many hours or days you would like to be open at the Station Arts Centre.

Feel free to include any other information you feel would be valuable for us to know about.

Again, the proposal deadline is May 1, 2025. At that point, the Cafe Committee will contact candidates to set up a meeting. Further information will be requested at that time and lease terms negotiated. Please submit proposals by email to [stationcafe@gmail.com](mailto:stationcafe@gmail.com).

Please note that successful candidates must follow all food preparation guidelines as required by provincial health inspectors in the industry. They must be able obtain insurance and other required documentation or qualifications. Successful candidates must also provide proof of being a registered business.